

Microsurgical Ultrasonic Tip with Micro-projection

JETIP



Bendable Apical Surgery Tips

JETip is an apico surgery tip that allows clinicians to bend the tip to any length and angle to suit their surgical needs.

Longevity and Safety with Micro-projection

JETips have sharp, abrasive micro-projections integrated onto the main body of the tip.

Unlike conventional diamond coated endodontic tips, whose coating wears off during surgery, tips with micro-projections are more resilient and efficient in cutting.

Versatility

JETips have a variety of shapes and sizes, so users can effectively control the amount of gutta percha and dentin removal.

They remain stable during the removal of gutta-percha.

Bending Jig

Optional Length and Angle

The Bending Jig is made of a soft material in order to provide clinicians the freedom to bend the jetip to different angles and lengths without damaging the micro-projections.

The Bending Jig has five depths(3, 4, 5, 6, and 7mm) allowing clinicians to bend the tip to different lengths.

One aperture may be used up to 2-4 times.

Item Code

Full set : JT2FA(Satelec), JT2FE(EMS)

JT-2 : EMS

JT2SE(Straight), JT2LE(Left), JT2RE(Right), JT2BE(Bendable)

Satelec

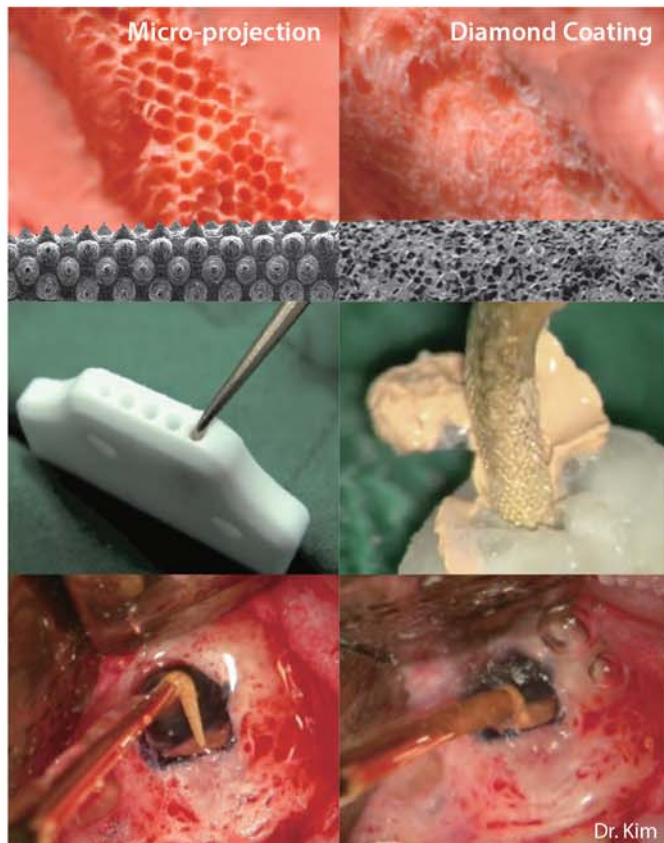
JT2SA(Straight), JT2LA(Left), JT2RA(Right), JT2BA(Bendable)

Appropriate power level



SATELEC®	10% · 20%
EMS®	Under 10%

E-Type not available for sale in the US.



Dr. Kim

JT-2 series for Micro-Surgery (Anterior, Posterior)

Bent Body Angle: 150° (All JT-2 series tips)

Micro-projection Size: 50µm

JT-2B represents the popular bendable tip. This tip allows clinicians to bend the tip ONLY once in one direction to any length and/or angle to suit their clinical needs, using the JETip bending jig.

JT-2S is bent 90° down at the tip of the bent body

JT-2L is bent 90° to the left at the tip of the bent body

JT-2R is bent 90° to the right at the tip of the bent body

Bending jig for JETIP bendable type
Item Code : JTBJ

